

## Issues in transcription of Modan Mohan Barmaṇa's *Satī ki kalaṅkinī*

Emerson Morgan and Christina Linklater  
July 29, 2021

IAML Online 2021

*Krishna and Radha*, ca. 1885  
Kalighat style (Kolkata), opaque watercolor on paper  
London, Victoria and Albert Museum, IS.534-1950

<https://collections.vam.ac.uk/item/O72613/krishna-and-radha-painting-unknown/>

# The U.S. RISM Office at Harvard University


---






Walter R. Spalding  
Reading Room

Photographer: Shelley  
Zatsky

# Cataloguing Harvard materials for RISM

[Dashboard](#) / [Welcome to the Isham Memorial Library wiki](#) 

 [Edit](#)  [Save for later](#)  [Watching](#)

## RISM

Created by Christina Linklater, last modified on Apr 15, 2020

The [Répertoire International des Sources Musicales](#) (RISM, International Inventory of Musical Sources in English) was founded in Paris in 1952. This international non-profit organization seeks to describe what music material exists and where it is held, with the joint aims of ensuring security and access. Since 1985, the United States RISM Office has been hosted at Harvard's Loeb Music Library.

When creating HOLLIS or HOLLIS for Archival Discovery records for Harvard materials, Harvard music cataloguers are encouraged to simultaneously create RISM records. Please begin by consulting the [Muscat training documentation](#) created by RISM Zentralredaktion (Central Office). When you are ready to begin cataloguing in Muscat, request a login and password from [Zentralredaktion](#).

### 1. Is the item already in RISM?

Surprisingly often, materials already have RISM records but their HOLLIS and WorldCat records were not updated to include RISM citations. Additionally, if materials are coming to Harvard from a former owner who participated in RISM, they may have RISM records in need of adjusting, i.e. changing the siglum. Regardless of provenance it is a good idea to check for an existing RISM record before creating a new one. This searching is most easily done in the [RISM OPAC](#). If you discover that the item you are cataloguing already has a RISM record, proceed directly to [citation](#).

### 2. Is the item eligible?

RISM records are always created for print and manuscript music materials representing the work of composers born no earlier than 1600, no later than 1800. It is cataloguers' judgment whether to include an item falling outside these parameters.

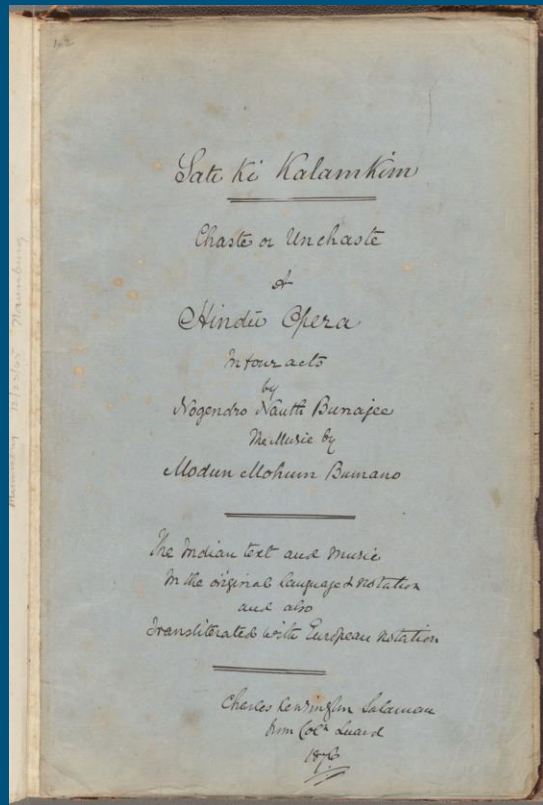
### 3. Editing an existing record

Perhaps you have discovered an error in an existing RISM record, or would like to contribute new information such as a link to a digitized version of the item. To

# Selecting materials to catalogue for RISM

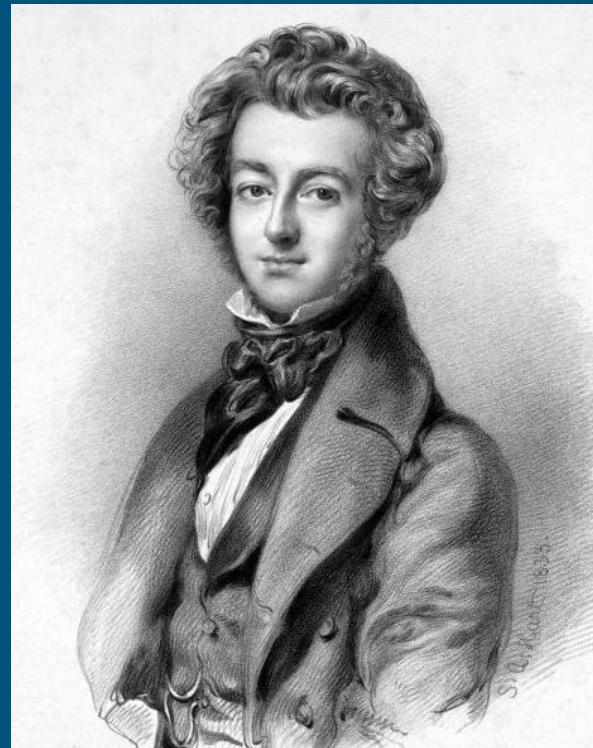
---

“RISM records are always created for print and manuscript music materials representing the work of composers born no earlier than 1600, no later than 1800. It is **cataloguers' judgment** whether to include an item falling outside these parameters.”



Mus 627.743.601

Eda Kuhn Loeb Music Library, Harvard  
University



Lithograph after a drawing by Solomon Alexander Hart.  
Music Division, The New York Public Library. "Charles  
Salaman." *The New York Public Library Digital Collections*.  
1600–1900.

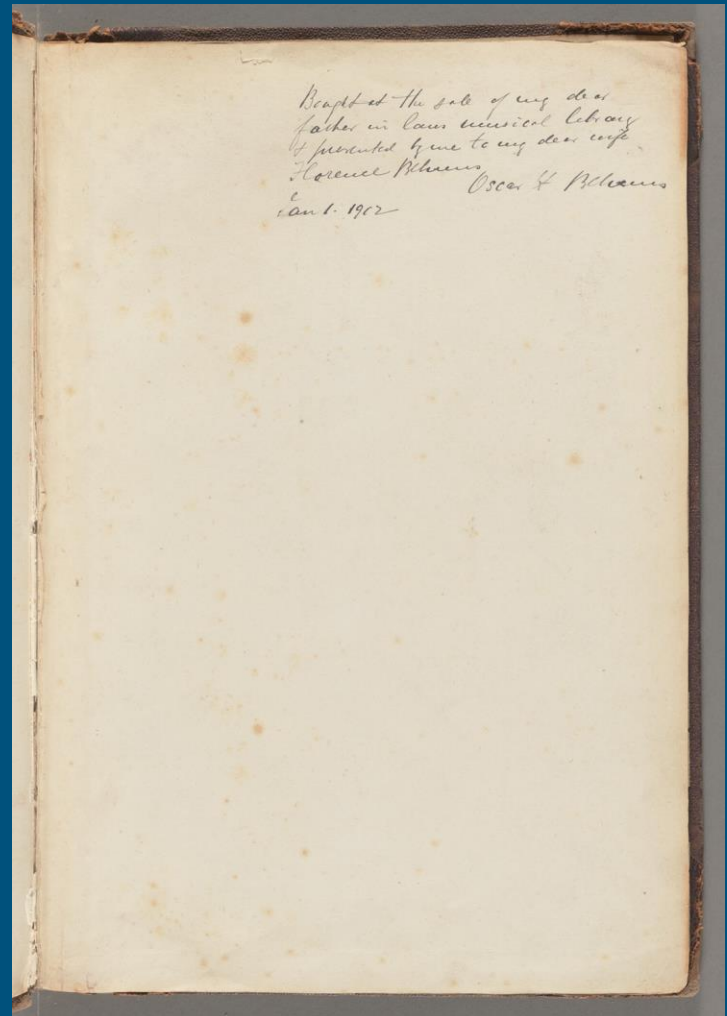




Madras Army, early 19th century. Wikimedia Commons. Artist unknown.

---

“Bought at the sale of my dear  
father in laws musical library  
+ presented by me to my dear wife  
Florence Behrens,  
Oscar H. Behrens  
Jan 1. 1902.”



# Acquisition

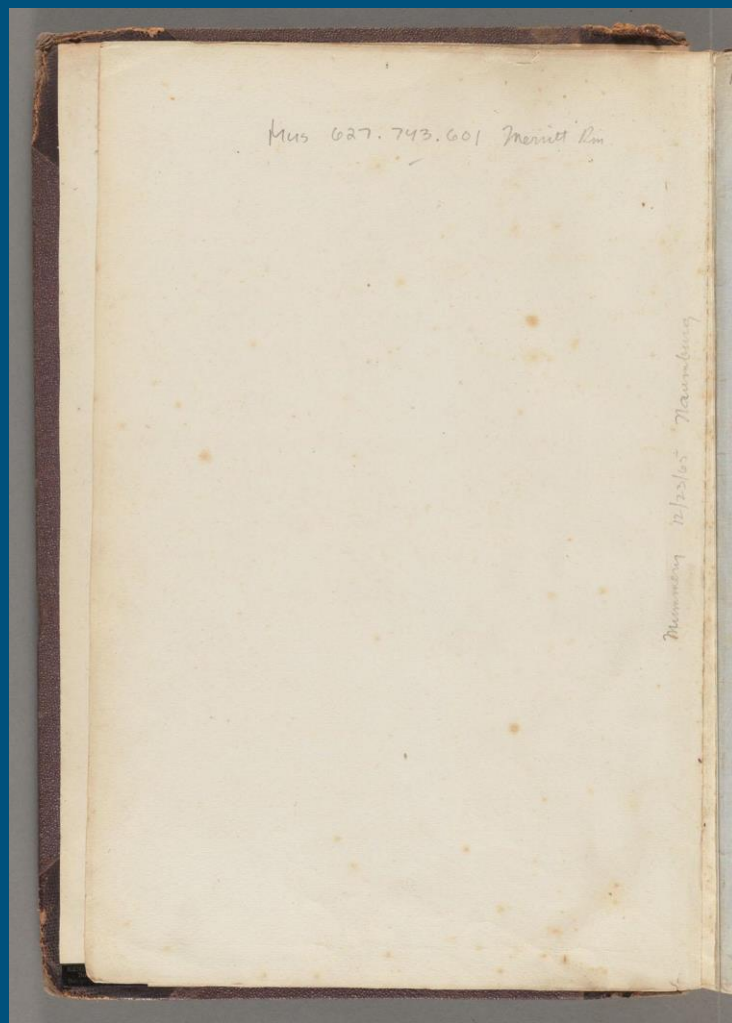
---

Dealer: (Kenneth) Mummery

Date: December 23rd, 1965

Fund: (Walter) Naumburg

Mummery 12/23/65 Naumburg





# বাংলা Bangla (Bengali)

Morgan, Emerson  
MUS MERR Mus 627.743.601

(1)

সানসি ইমন্-ভাষানী  
গান এককালকাল

সেম সিকোন  
ধন মানস ককুন ককুন  
সমিক-ভাবুক, জি বিমান  
সমিক ধন, মাধনিকি ধন  
সমিক সান, মাধনিকি ধন  
সমিক সান, মাধনিকি ধন  
সমিক সান, মাধনিকি ধন  
সমিক সান, মাধনিকি ধন  
সমিক সান, মাধনিকি ধন  
সমিক সান, মাধনিকি ধন

(2)

Pragati Aman - Bhupali  
Tata Bhupali

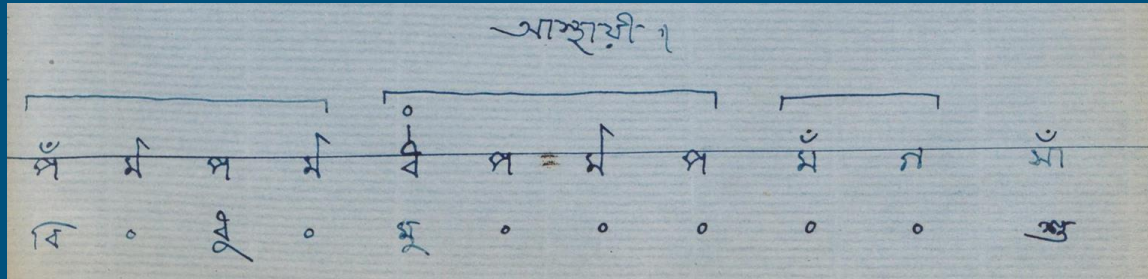
Prima riketana.  
Jana manada rangun karana.  
Pasika shabada lekha lunadana.  
Pasika jana, sadhuni shana.  
Kari lila gaba api baye dabe sha mana.  
Prima naki naki sadha niramala sobekhi.  
Sukha lahari bhikari, prema ebhadi uttharhi.  
Sudhi jana banchhita ye dhana.

First strain.

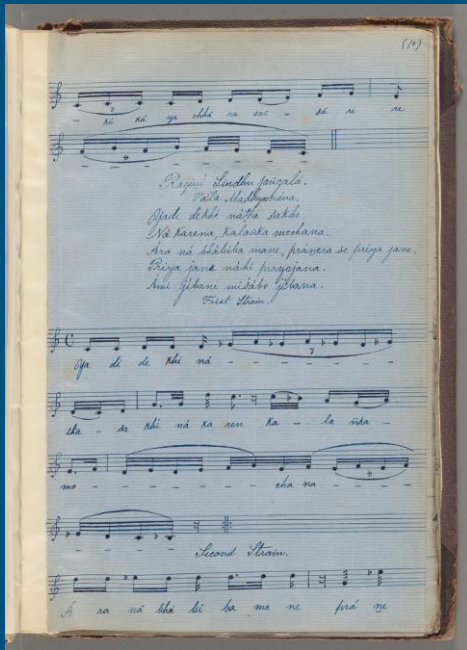
## Romanization

# বাংলা Bangla (Bengali)

- ALA-LC Romanization table (2017)
- OS-native character utilities
- Omicron Labs software
- Google Translate



# Genre/form terms: rāgiṇī, tāla



(5) Rāgiṇī Khāmbāḥ

(4) Rāgiṇī Behāḡ

(3) Rāgiṇī Gauṛa-Sāraṅga

(3) Rāgiṇī Iman-Bhūpālī

(3) Rāgiṇī Jaṅlā-Bānrayā

(3) Rāgiṇī Janlā-jhijhit

(3) Rāgiṇī Jaṅlā-Pilu

(3) Rāgiṇī Sāhānā

(3) Rāgiṇī Sāraṅga

(2) Rāgiṇī Bāgeśvarī

(2) Rāgiṇī Jaṅlā-Jayajayantī

(2) Rāgiṇī Lum-jhijhit

(2) Rāgiṇī Māroyā

(2) Rāgiṇī Multānī

(2) Rāgiṇī Paraja-Kālāṅṛā

(2) Rāgiṇī Paraja-Rāmakelī

(2) Rāgiṇī Pilu-jaṅlā

(2) Rāgiṇī Sindhū jaṅgalā

(2) Rāgiṇī Surāṭha-Mallāra

(1) Rāgiṇī Chhayāṇaṭ

# US-CAe Mus 627.743.601, pp. 22r, 24r

রাগিনী বেহাগ • Rāgiṇī Behāg

তাল মধ্যমান • Tāla Madhyamāna

বি ধু মু খ শু - কা লো (ক ন. ন-য় - নে - র জ-লে অ-ল-কা,  
Bi dhu mu [kha] śu - kā lō kē nā. Na - ya - nē - ra ja - lē a - la - kā,

2 ভা - সি গে - ছে কো-থা চ লি. য - ত অ-ঙ রা - গ অ- গে - তে মি - শী - ল, ত-বু ক - র চ - তু - রা লী.  
Bhā - si gē - chhē kō - thā cha li. Ya - ta añ - ga rā - ga añ - ge - te mi - śi - la, Ta - bu ka - ra cha - tu - rā lī.





ধন্যবাদ

Thank you

*Krishna and Radha, ca. 1885*  
Kalki style (Kolkata), opaque watercolor on paper  
London, Victoria and Albert Museum, IS.534-1950

<https://collections.vam.ac.uk/item/O72613/krishna-and-radha-painting-unknown/>