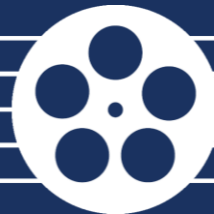


I'M BEGINNING TO SEE THE LEITMOTIF

MAX STEINER'S EARLIEST SURVIVING FILM SCORE SKETCH

Jeff Lyon and Brent Yorgason
Brigham Young University



WESLEY RUGGLES' DRAMA OF
20TH CENTURY YOUTH

...Purged in the flame of experience

ARE THESE OUR CHILDREN

MADE BY THE
CREATORS OF
THE IMMORTAL
"CIMARRON"

ERIC LINDEN
BEN ALEXANDER
BERYL MERCER
MARY KORNMAN
ARLINE JUDGE
ROBERTA GALE
ROCHELLE HUDSON
ADAPTATION AND DIALOG
HOWARD ESTABROOK

RKO-RADIO
PICTURE

CREATORS OF IMMORTAL "CIMARRON"
BRING YOU THE FABULOUS STORY OF MODERN
YOUTH.... A MOTION PICTURE WHICH LIFTS A
CLARION VOICE TO WARN A GODLESS GENERATION!

PUT IT IMMEDIATELY
ON YOUR
CURRENT MOVIE LIST

Super-drama that strides
boldly from out the ranks of
routine productions and lays
bare the oncoming story of
many of today's young
moderns...

The growing boy and girl... lashed
to the Twentieth Century Zepher
near of that leads... are the
most dramatic figures of our
civilized civilization.

GRAND ENTERTAINMENT THAT
STRIKES STRAIGHT TO YOUR
HEART... and awakens not a
single general.

Directed by Wesley Ruggles
From a story by Howard Estabrook
The cast includes:
Eric Linden, Ben Alexander, Arline
Judge, Roberta Gale, Rochelle
Hudson, Beryl Mercer

'ARE THESE OUR CHILDREN?'

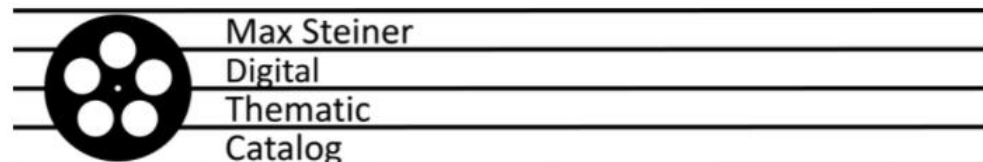
RKO RADIO PICTURE

Released November 14, 1931

Steiner's 31st film for RKO

THE MAX STEINER DIGITAL THEMATIC CATALOG

- **190** film scores
(out of over 350)
- **31,230** pages of
hand-written music
- Data from 50+ crime films
at maxsteinerinstitute.org



Brigham Young University

Search

<input type="text" value="tag search"/>	<input type="button" value="Search"/>
<input type="text" value="annotation search"/>	<input type="button" value="Search"/>
<input type="text" value="theme search"/>	<input type="button" value="Search"/>
<input type="text" value="tune search"/>	<input type="button" value="Search"/>
<input type="text" value="person or character"/>	<input type="button" value="Search"/>
<input type="text" value="cue sheet search"/>	<input type="button" value="Search"/>

Completed Films

[Are These Our Children? \(1931\)](#)
[High Stakes \(1931\)](#)
[The Public Defender \(1931\)](#)
[Three Who Loved \(1931\)](#)
[Transgression \(1931\)](#)
[Traveling Husbands \(1931\)](#)
[Hell's Highway \(1932\)](#)
[Hold 'Em Jail \(1932\)](#)
[Is My Face Red? \(1932\)](#)
[Ladies of the Jury \(1932\)](#)
[Men of America \(1932\)](#)
[Penguin Pool Murder \(1932\)](#)
[Rockabye \(1932\)](#)
[Secrets of the French Police \(1932\)](#)
[State's Attorney \(1932\)](#)
[The Phantom of Crestwood \(1932\)](#)
[The Roadhouse Murder \(1932\)](#)
[Thirteen Women \(1932\)](#)
[Before Dawn \(1933\)](#)
[Blind Adventure \(1933\)](#)

STEINER'S FILM SCORE SKETCHES (ANGELS WITH DIRTY FACES, 1938)

Angels
BOYS RUN

$\text{♩} = 140$
 $10\frac{1}{4}$ FR.

Reel I. Part II.

BOYS JUMP

BOYS RUN

MOLTO ALLEGRO
FF (RUNS very pronounced)

1st Harp and
gliss

Pianos (or something
like it)

gliss

(Picc etc)
Tutti
fff

Tempo TRACK

(4) MARCATO (BRASS etc)

4 cops

with soft stick

PLEASE!!!

CUE FROM ARE THESE OUR CHILDREN? (1931)

①

Alternative Transition #8
(if no chorus) #7

15

P-7

p

rall

a tempo

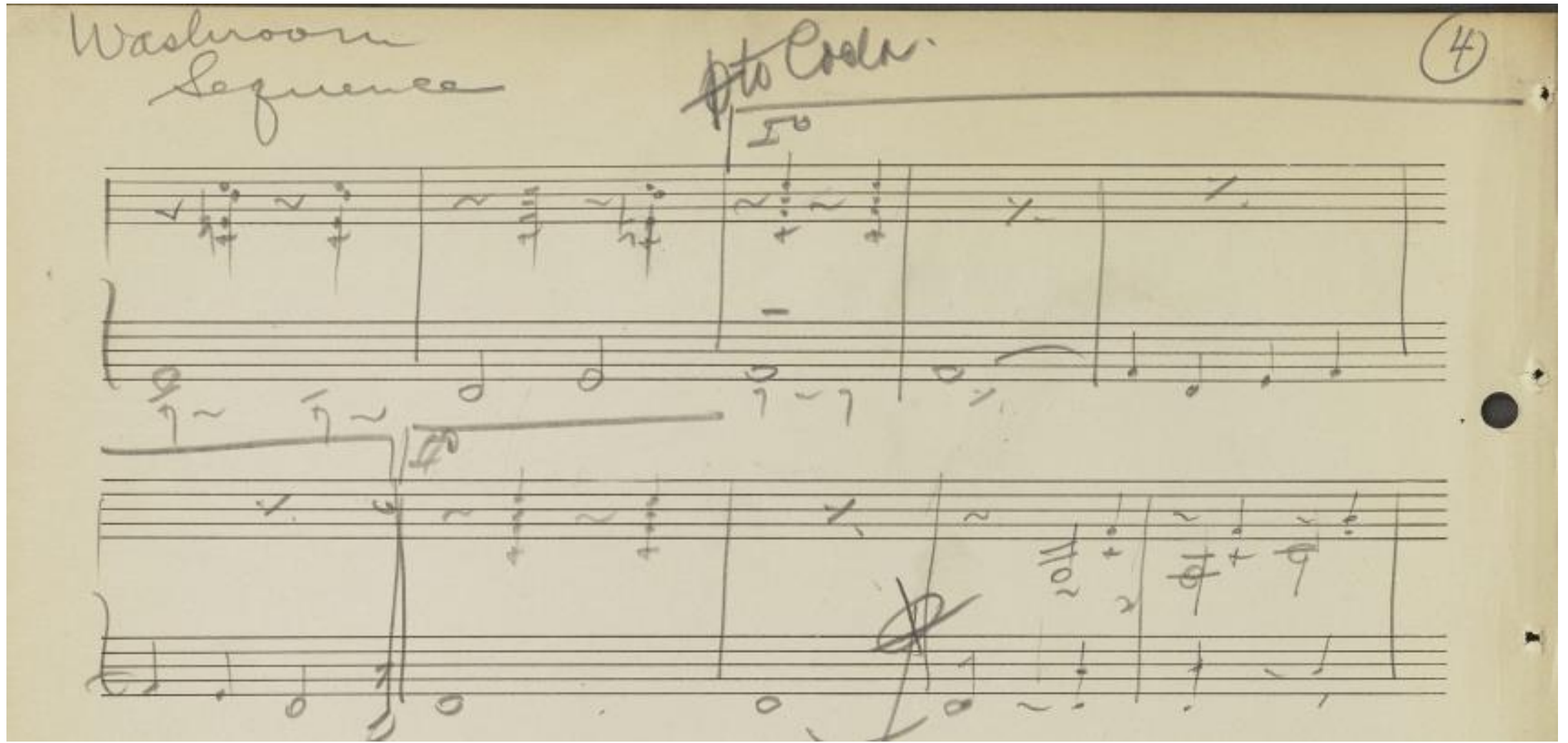
rall

a tempo

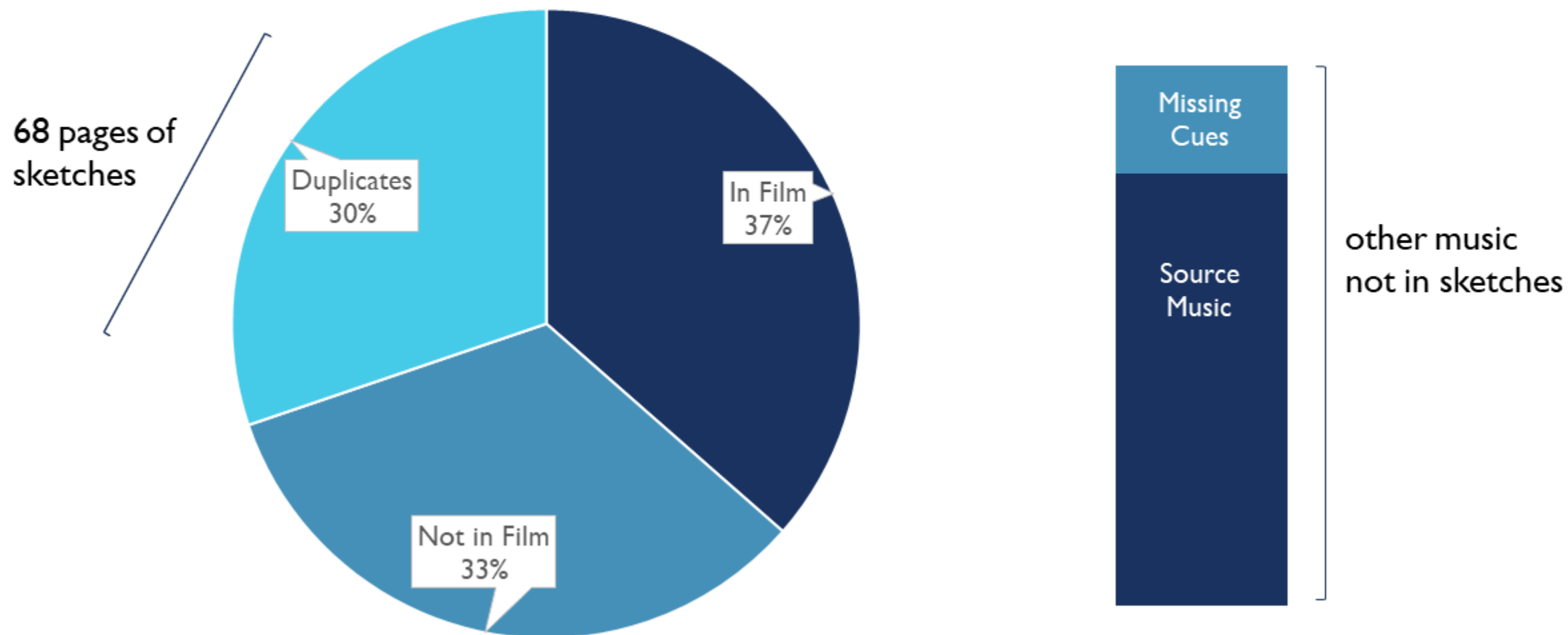
rall

JUMBLING PAGE ORDERING

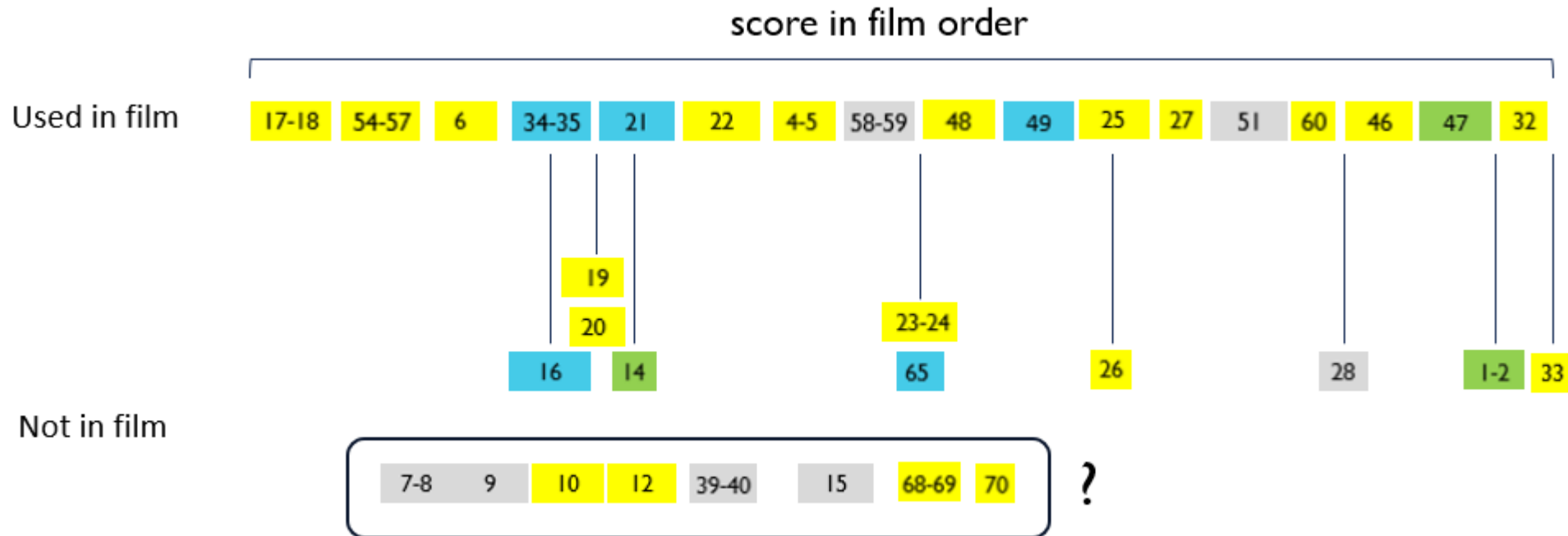
Transition #13 (not used in film)



PUTTING THE PAGES IN ORDER



SORTING OUT THE SKETCHES



Dreams

Makes You Forget Your Troubles

Dreams + Makes You Forget

Other

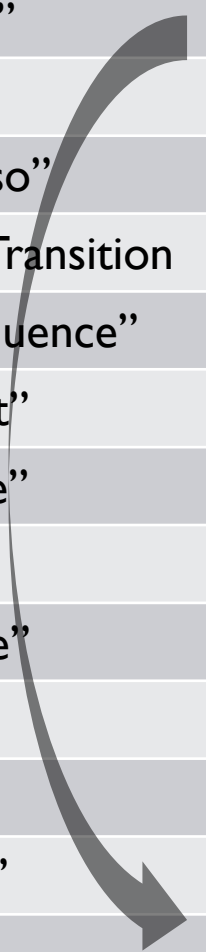
20 variants in sketches (9 not in film) + 2 source + 3 not in score = **25 instances**

5 variants in sketches (2 not in film) + 8 source = **13 instances**

3 variants in sketches (2 not in film) = **3 instances**

Transformations of the “Dreams” Theme

Title	Key	Meter	Characteristics
“Opening Scene”	F major	4/4	Gentle / Sweet – strings and harp
“Meno”	Db major	4/4	Peaceful / Pastoral
“Marcia Maestoso”	G major	12/8	March: Majestic / Heroic to Comical – brass
“Coney Island” Transition	C major	3/4	Waltz: Joyful / Fun
“Washroom Sequence”	F minor	2/2	Source music: Somber – low-register instruments
“Flo’s Apartment”	Unstable – f#	3/4 – 4/4	Lyrical to Tragic / Dark – strings to full orchestra
“Crime Montage”	Unstable – a	4/4	Dramatic / Fragmented - brass
“Mourning”	f – ab – Cb – eb	4/4	Sad / Mournful – swirling string effects
“Choral Andante”	Unstable	4/4	Dissonant parallel quartal chords – wordless chorus
“Risoluto”	Unstable / minor	3/4	Violent / Strange – low-register strings / muted brass
“Allegro”	Whole-tone	4/4	Chaotic / Frenetic to Somber – combination of themes
“Transition #8B”	Bb minor	2/2	Mysterious / Restless
“Eddie’s Prayer”	F minor	4/4	Penitent / Religious – organ and wordless chorus



Transformations of the “Dreams” Theme

Original



Marcia Maestoso



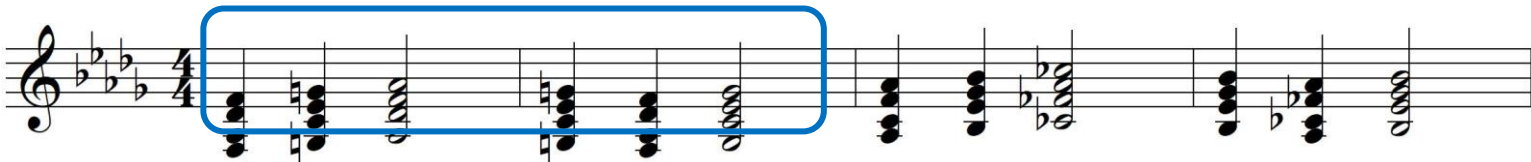
Washroom Sequence



Crime Montage



Mourning



Risoluta

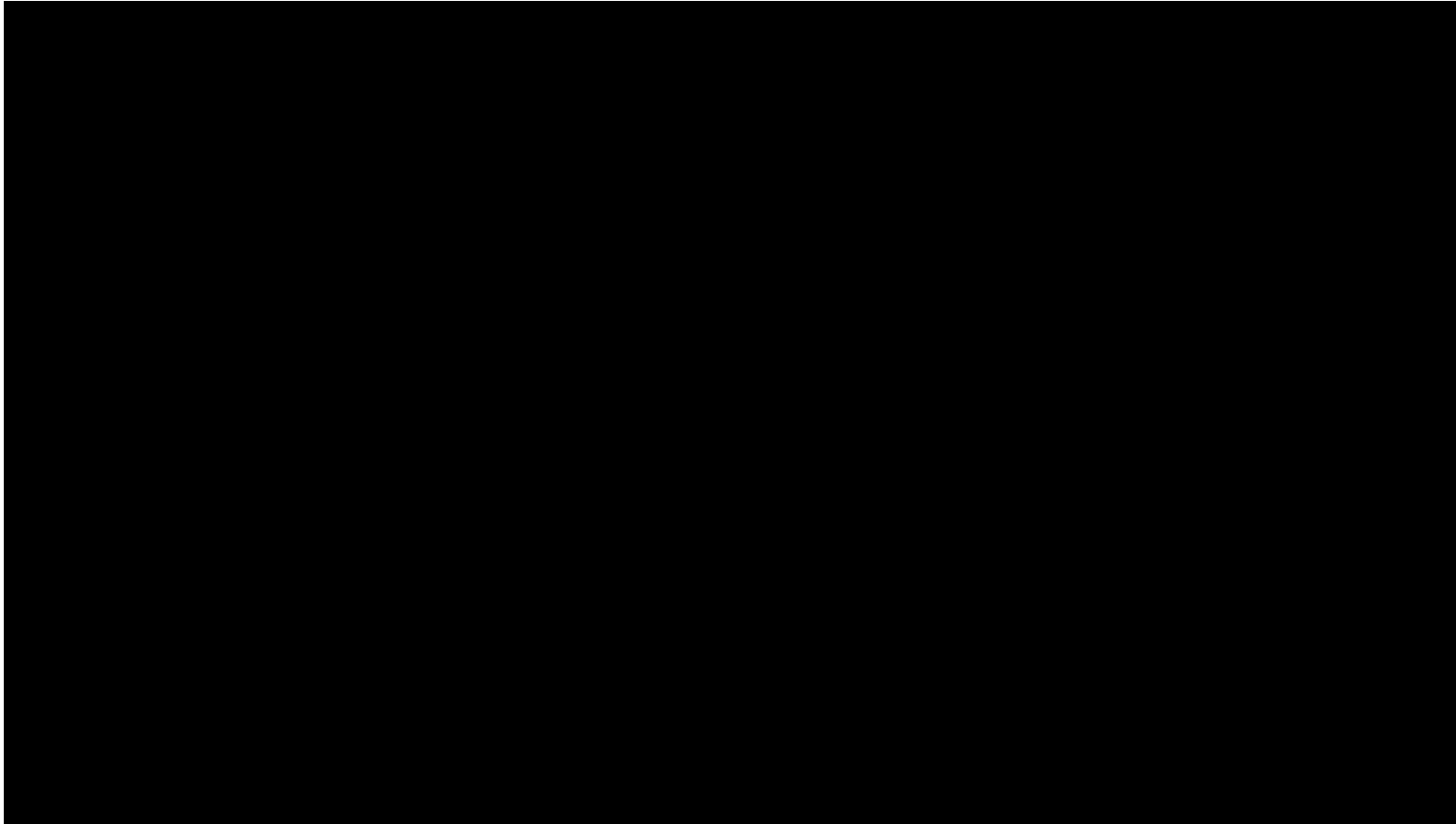


Eddie's Prayer



Dreams – Opening Scene

Title	Key	Meter	Characteristics
“Opening Scene”	F major	4/4	Gentle / Sweet – strings and harp



Dramatic situation:

Eddie and Mary sitting
and talking on the front
steps



Dreams – “Meno”

Title	Key	Meter	Characteristics
“Meno”	Db major	4/4	Peaceful / Pastoral



Dramatic situation:

Unknown (somewhere early in the film)



Dreams – Marcia Maestoso

Title	Key	Meter	Characteristics
“Marcia Maestoso”	G major	12/8	March: Majestic / Heroic to Comical – brass

Dramatic situation:

Eddie participates in an oratory competition but does not do as well as he had hoped



Dreams – “Coney Island” Transition

Title	Key	Meter	Characteristics
“Coney Island” Transition	C major	3/4	Waltz: Joyful / Fun



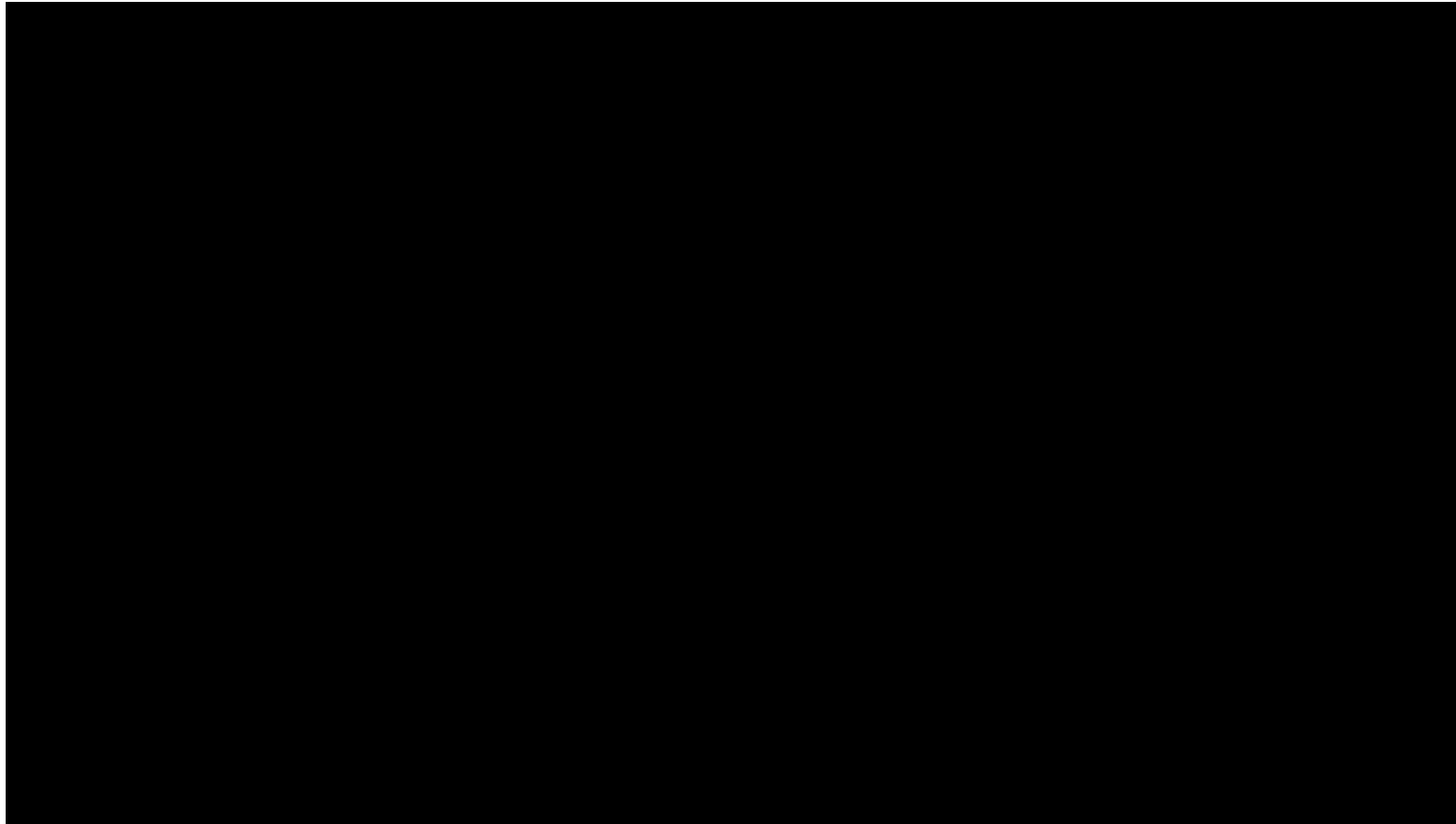
Dramatic situation:

Unknown, although Flo does remark: “You don’t know what happened at Coney Island!” early on



Dreams – Washroom Sequence

Title	Key	Meter	Characteristics
“Washroom Sequence”	F minor	2/2	Source music: Somber – low-register instruments



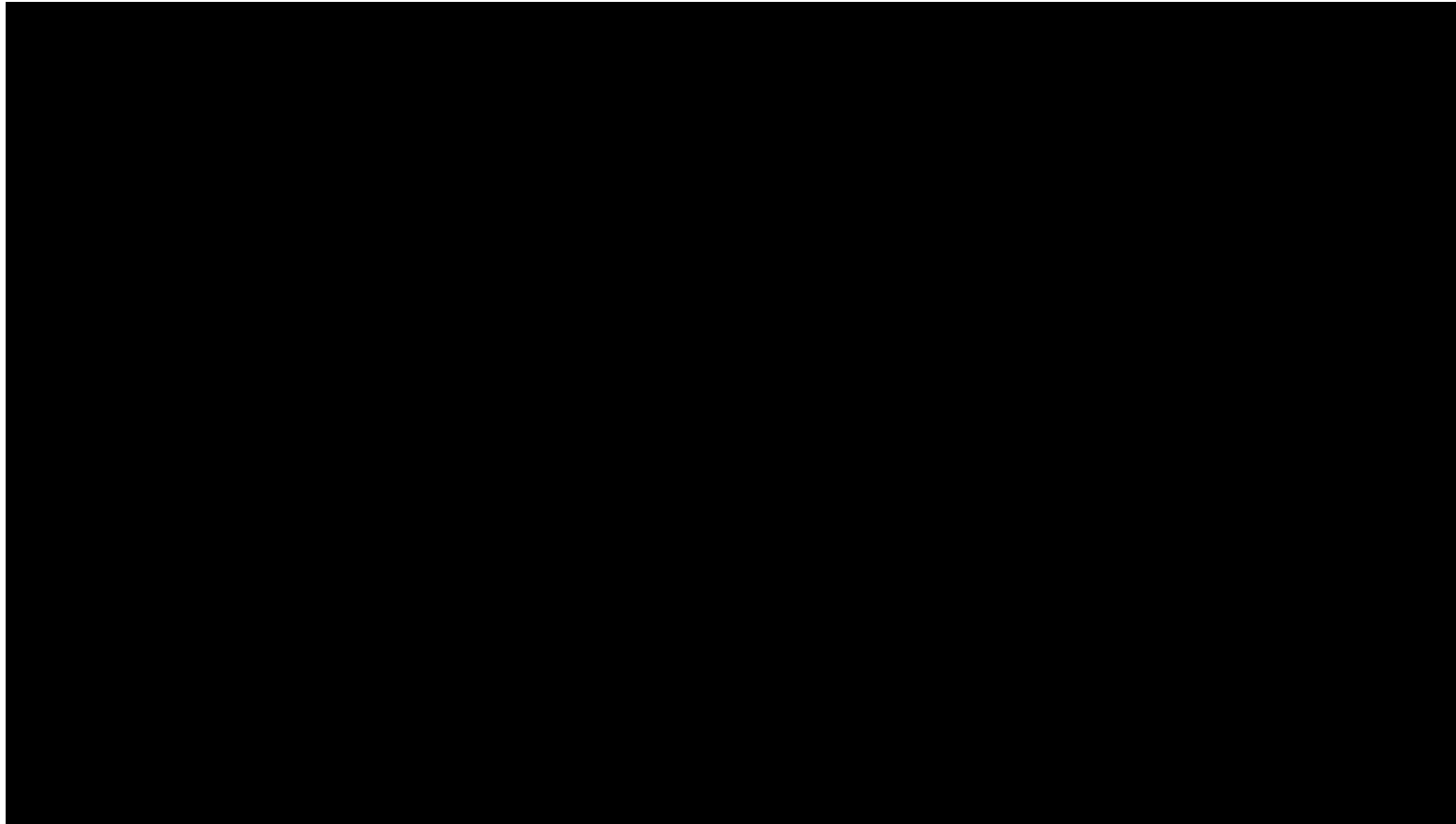
Dramatic situation:

Eddie and his buddies
talking by the washroom
at a party (the music is
supposedly diegetic)



Dreams – Flo’s Apartment

Title	Key	Meter	Characteristics
“Flo’s Apartment”	Unstable – f#	3/4 – 4/4	Lyrical to Tragic / Dark – strings to full orchestra



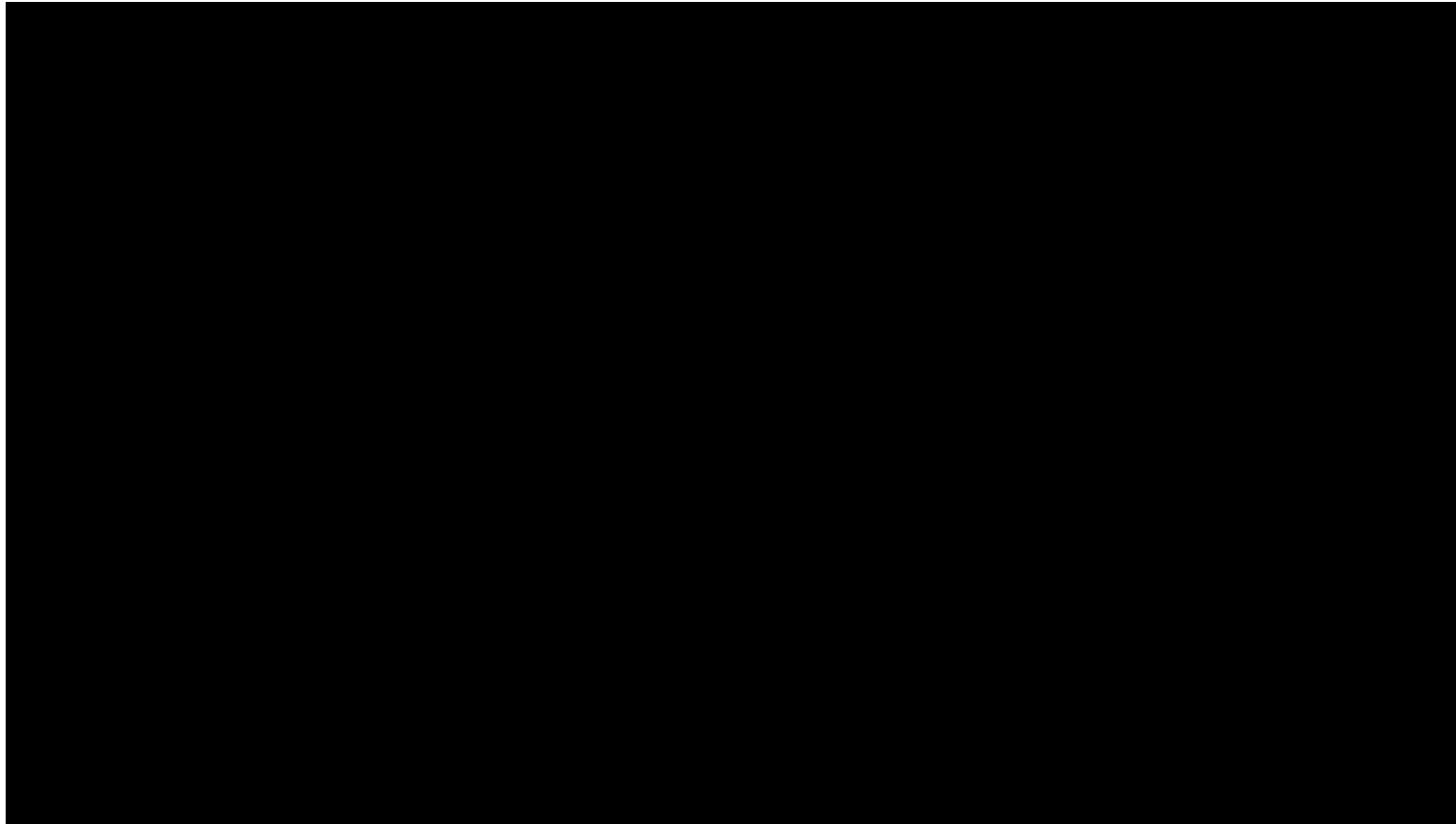
Dramatic situation:

Eddie has just entered
Flo’s apartment – two
hours pass!



Dreams – Crime Montage

Title	Key	Meter	Characteristics
“Crime Montage”	Unstable – a	4/4	Dramatic / Fragmented - brass



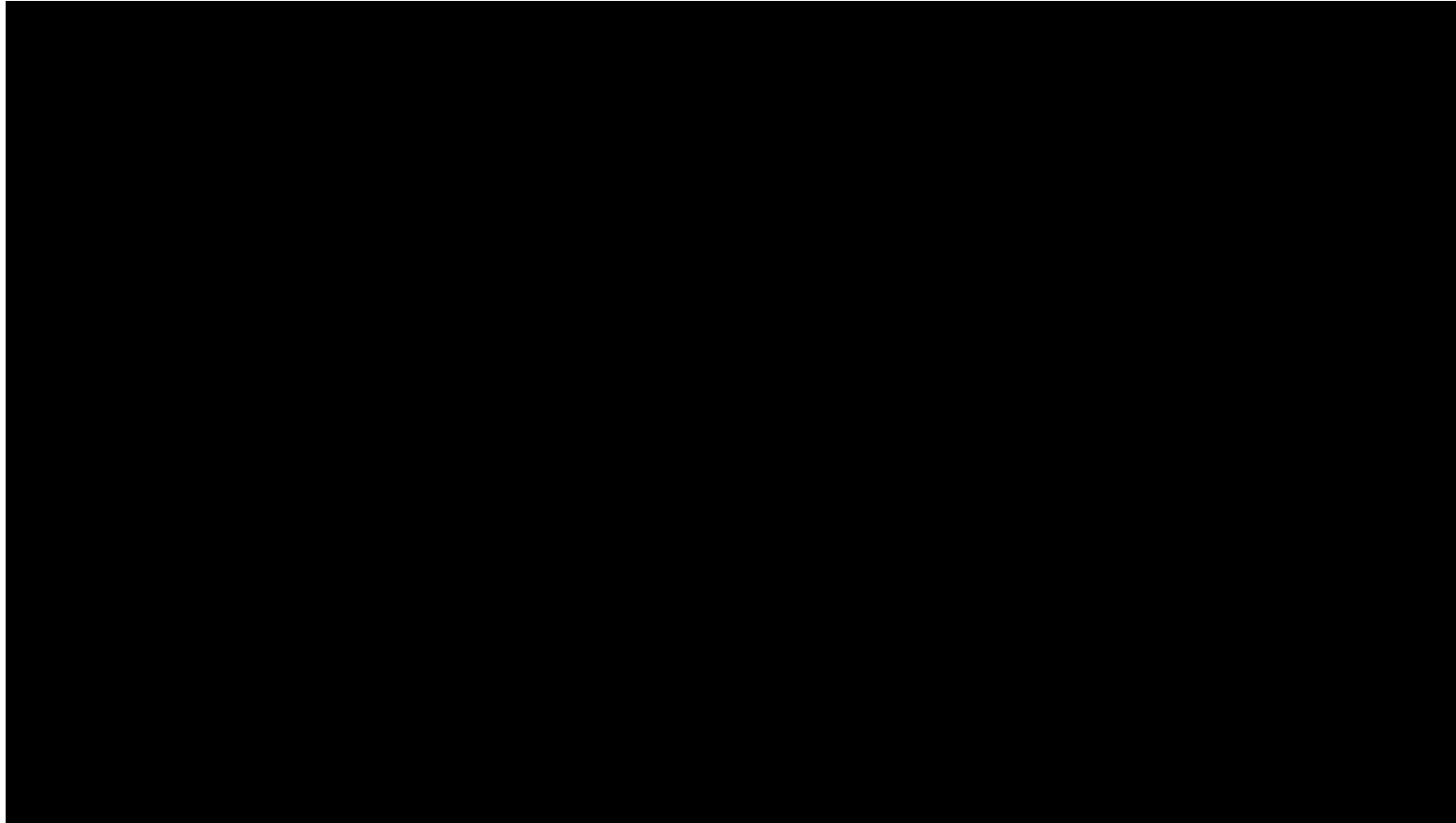
Dramatic situation:

Eddie argues with his grandmother and goes out to find some cash



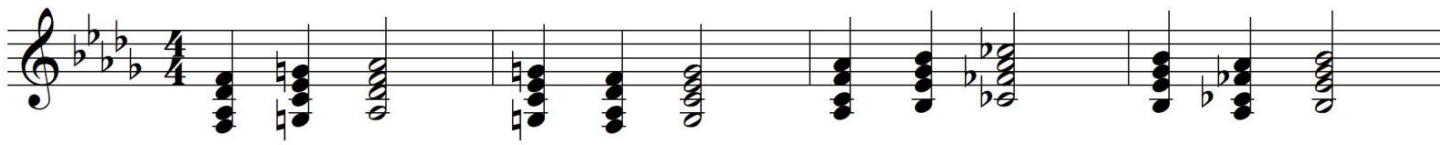
Dreams – Mourning

Title	Key	Meter	Characteristics
“Mourning”	f – ab – Cb – eb	4/4	Sad / Mournful – swirling string effects



Dramatic situation:

Mary and Eddie's
grandmother mourn the
loss of their family friend
(killed by Eddie)



Dreams – Choral Andante

Title	Key	Meter	Characteristics
“Choral Andante”	Unstable	4/4	Dissonant parallel quartal chords – wordless chorus



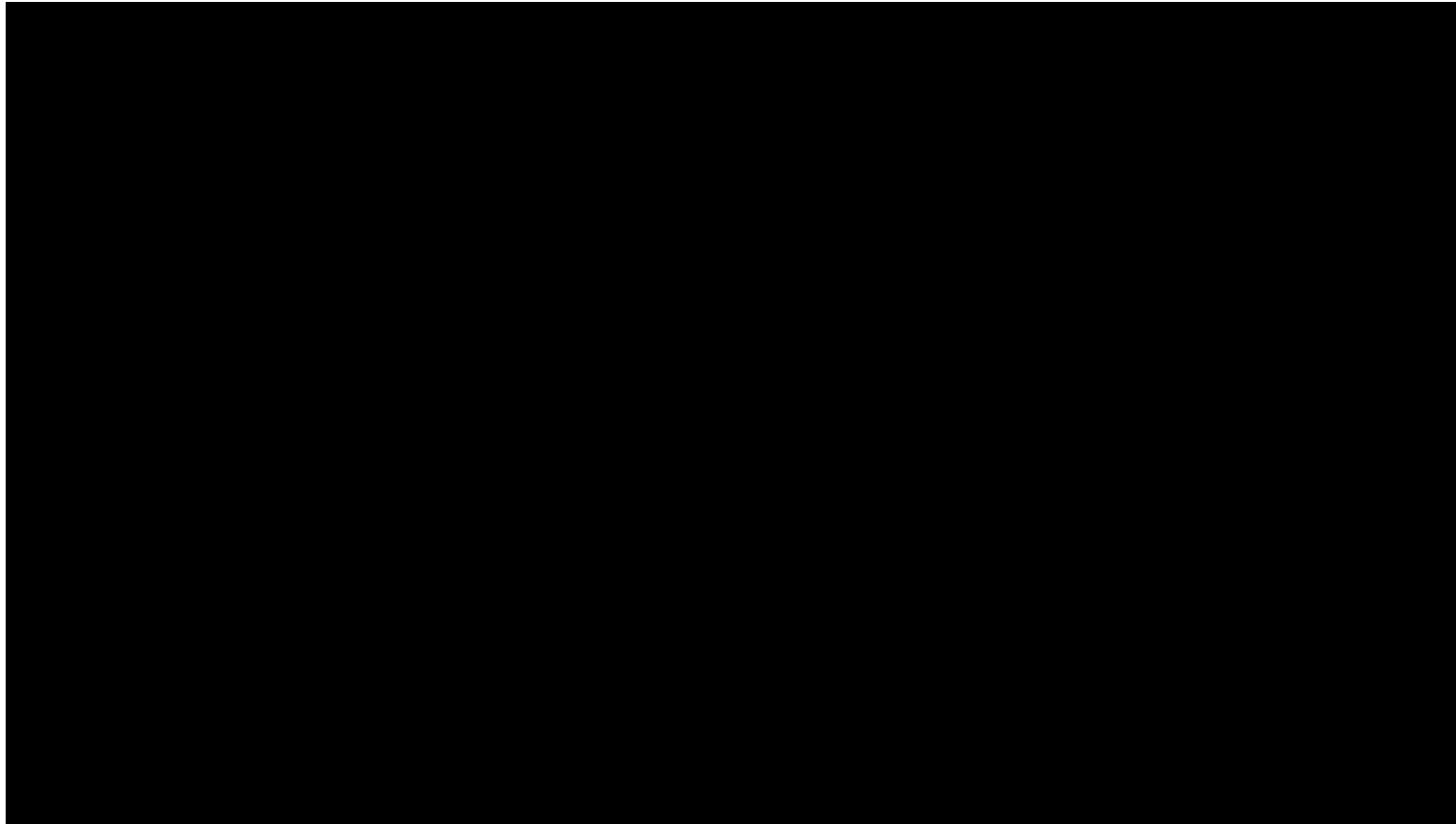
Dramatic situation:

This is an alternate cue for a montage of swirling newspapers (sung by a wordless chorus)



Dreams – Risoluto

Title	Key	Meter	Characteristics
“Risoluto”	Unstable / minor	3/4	Violent / Strange – low-register strings / muted brass



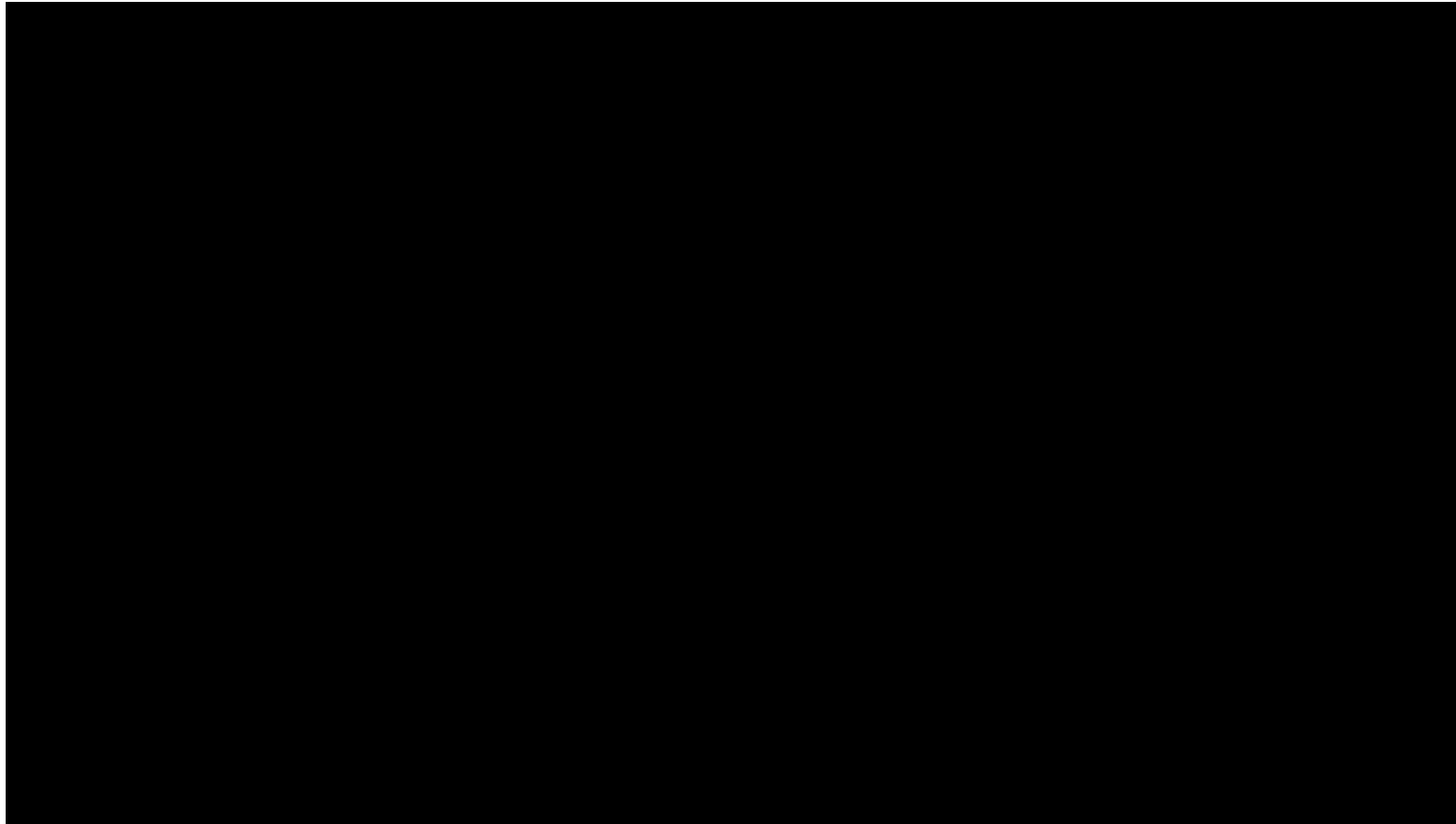
Dramatic situation:

Eddie evades detection
for the murder he has
committed (violent cue
with strange dissonance)



Dreams – Allegro

Title	Key	Meter	Characteristics
“Allegro”	Whole-tone	4/4	Chaotic / Frenetic to Somber – combination of themes



Dramatic situation:

After being captured by the police, the public debates Eddie's fate

(“Dreams” is combined with “Makes You Forget Your Troubles” in the second half of the cue)



Dreams – Transition #8B

Title	Key	Meter	Characteristics
“Transition #8B”	Bb minor	2/2	Mysterious / Restless

The musical score for "Transition #8B" is presented in two systems. Each system consists of two staves. The top staff of each system features a single note (Bb) with a long sustain line, while the bottom staff contains a continuous eighth-note accompaniment. The key signature is Bb minor (three flats: Bb, Eb, Ab). The first system has three measures, and the second system has three measures. The music is characterized by a mysterious and restless atmosphere.

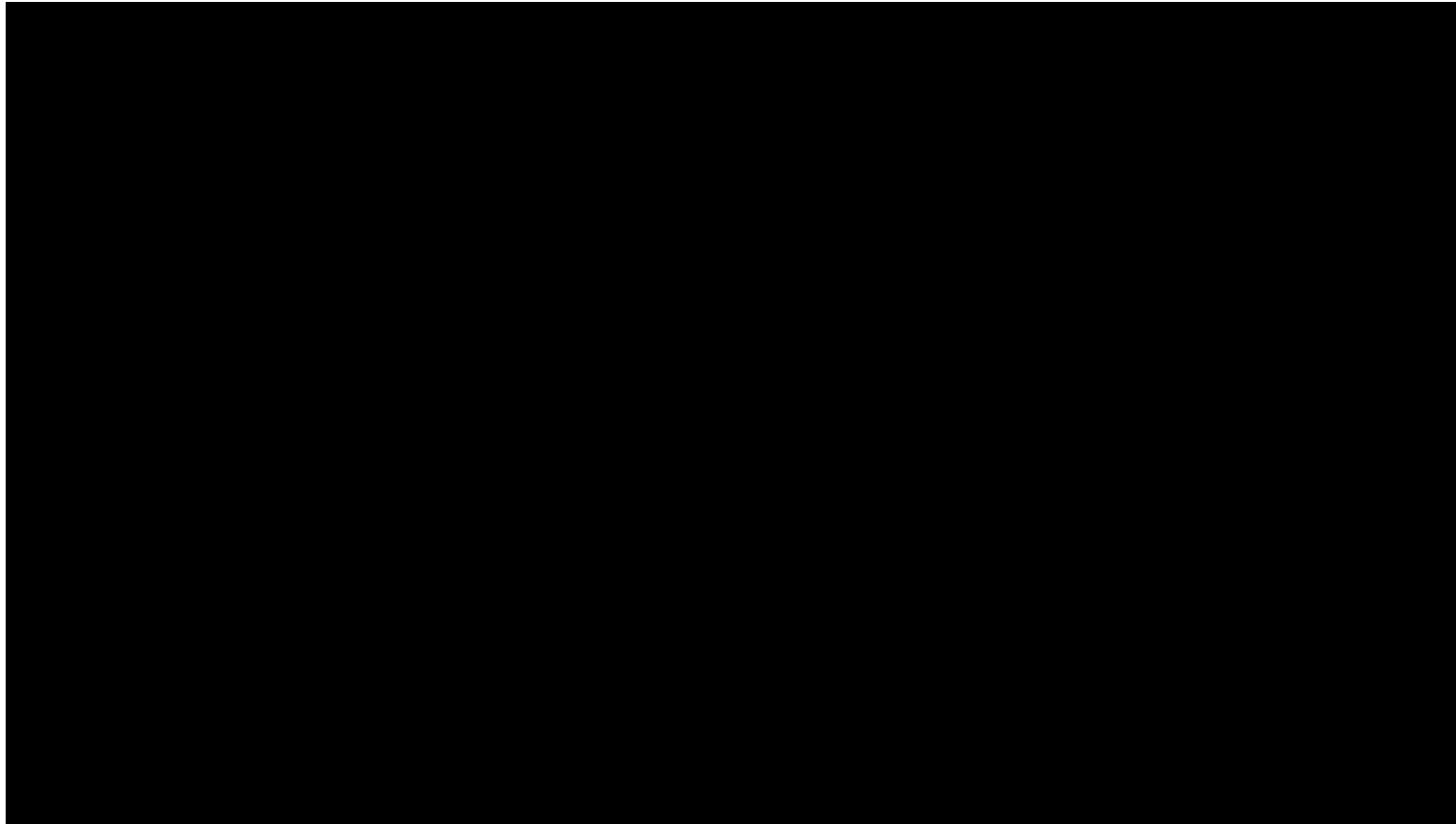
Dramatic situation:

Unknown – mysterious
cue that occurs in the
latter part of the film



Dreams – Eddie's Prayer

Title	Key	Meter	Characteristics
"Eddie's Prayer"	F minor	4/4	Penitent / Religious – organ and wordless chorus



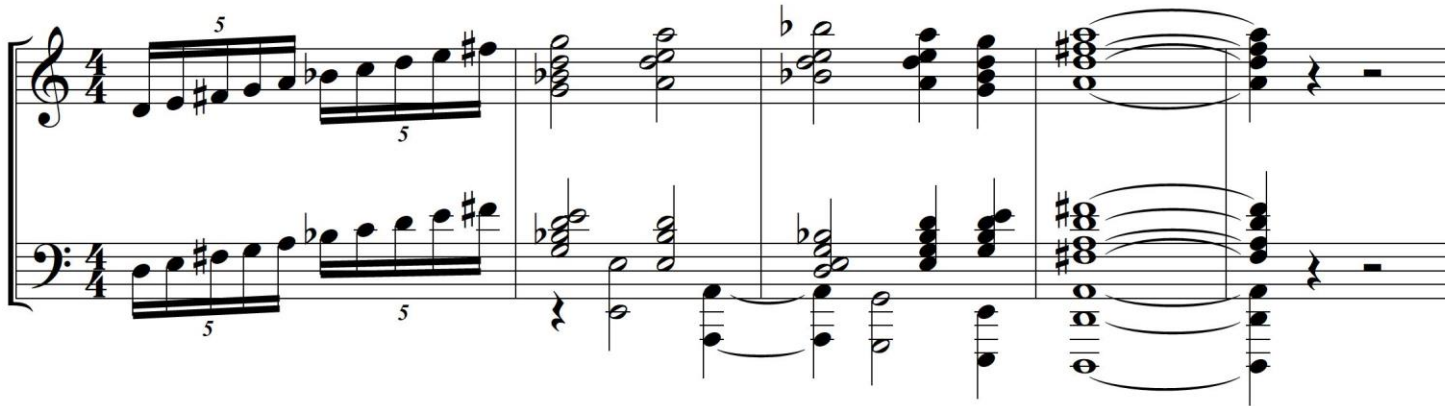
Dramatic situation:

On death row, Eddie recites the Lord's Prayer after having said farewell to his loved ones



Dreams – End Title

Title	Key	Meter	Characteristics
“End Title”	D minor / major	4/4	Triumphant?



Dramatic situation:

End title music –
alternate big finish!



I'M BEGINNING TO SEE THE LEITMOTIF

MAX STEINER'S EARLIEST SURVIVING FILM SCORE SKETCH

maxsteinerinstitute.org

Jeff Lyon and Brent Yorgason
Brigham Young University

